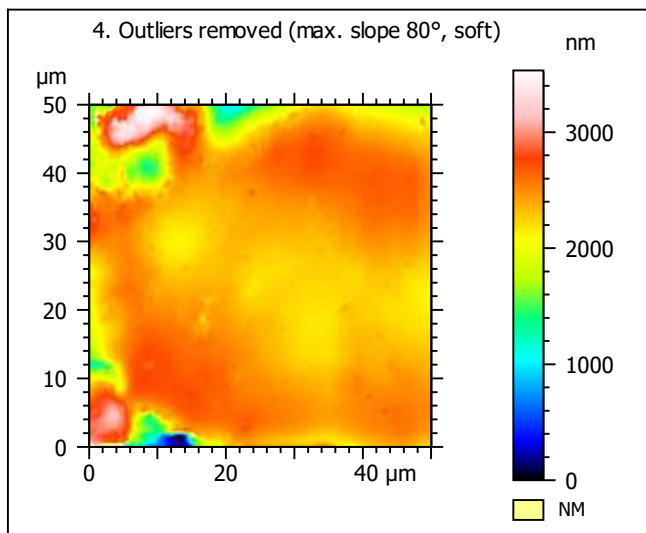
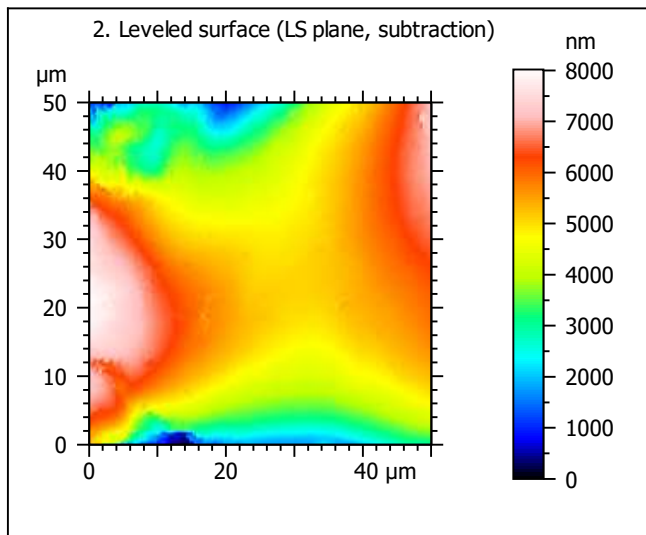
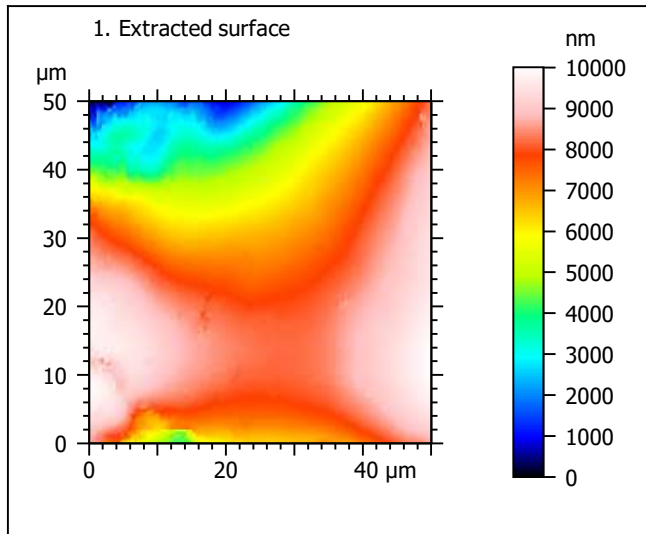
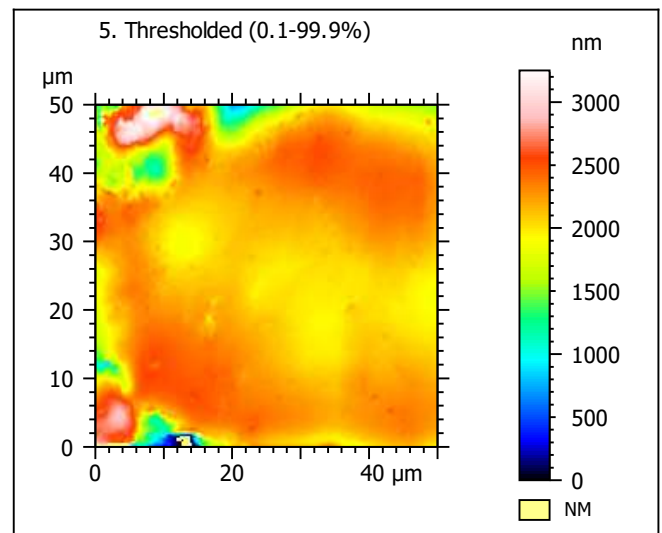
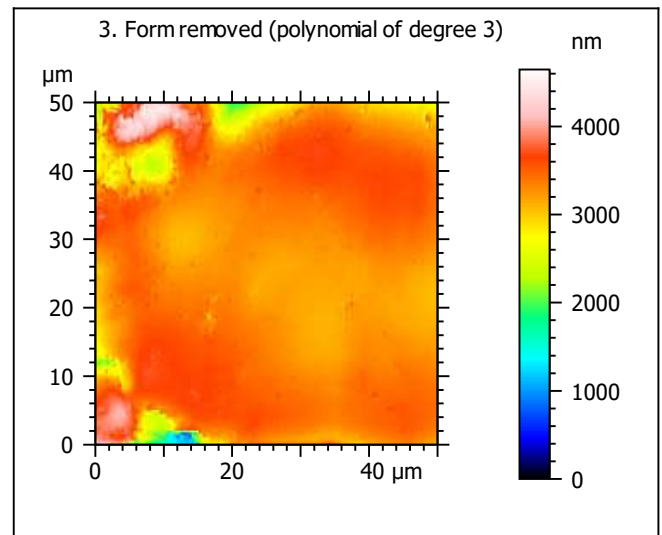


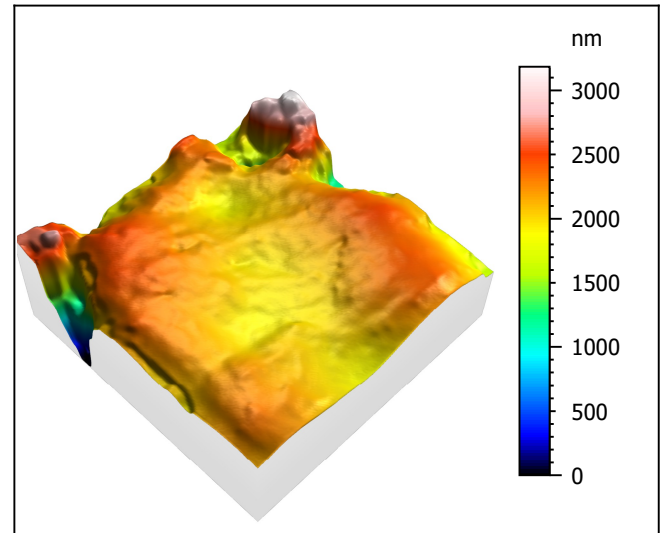
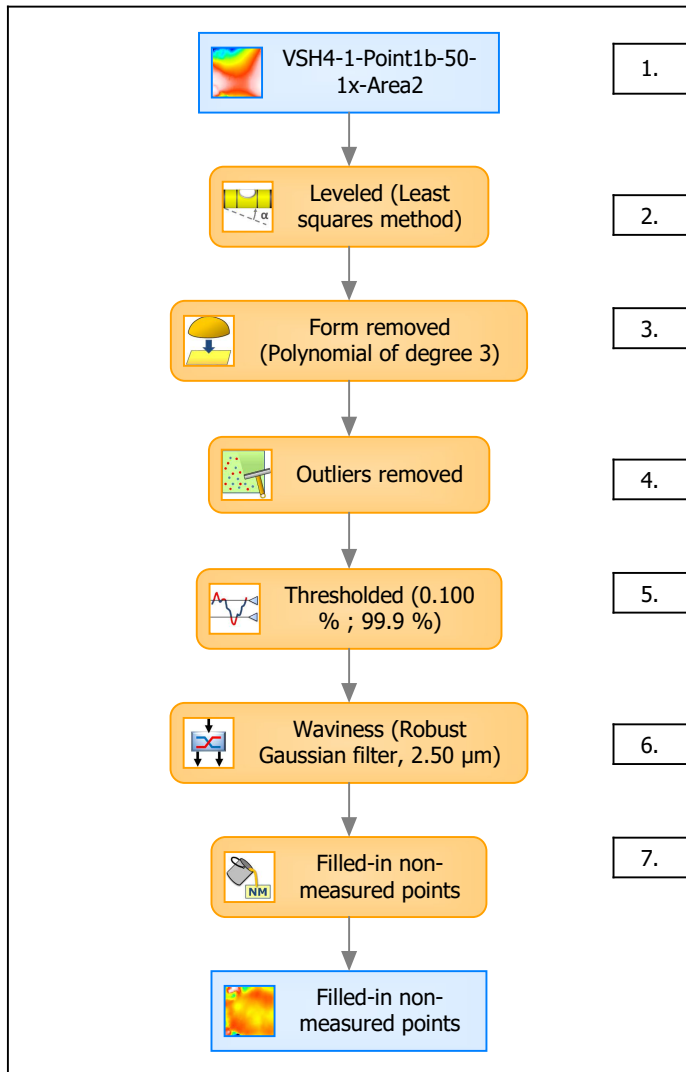
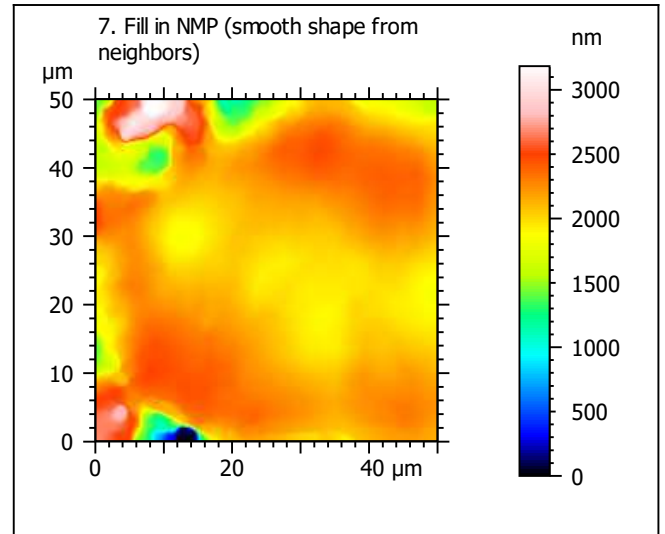
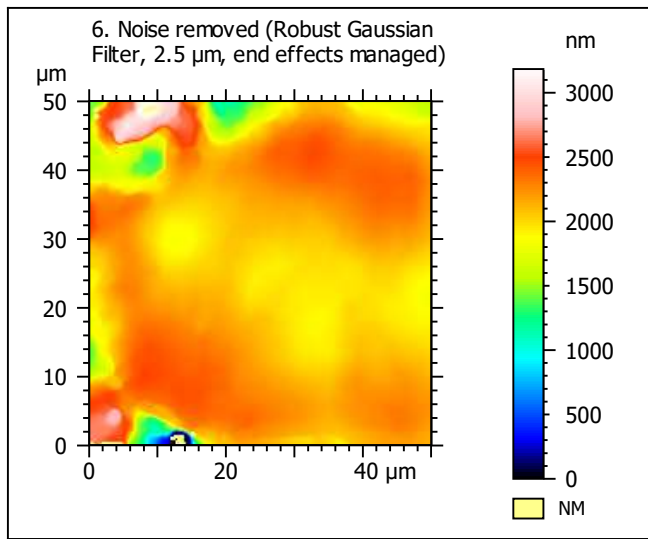
Template to process all extracted 50x50  $\mu\text{m}$  surfaces, acquired with the LEXT 4000 with the 50x/0.95 objective at 1x zoom

## A. Processing



Identity card			
Name:	VSH4-1-Point1b-50-1x-Area2		
File path:	D:\Data\Ant...\VSH4-1-Point1b-50-1x-Area2.sur		
Axis:	X		
Length:	50.0	μm	
Size:	201	points	
Spacing:	0.250	μm	
Axis:	Y		
Length:	50.0	μm	
Size:	201	points	
Spacing:	0.250	μm	
Axis:	Z		
Length:	10007	nm	
Size:	7410	digits	
Spacing:	1.35	nm	
NMP ratio:	0.00 % (0 Pts)		





Identity card			
Name:	VSH4-1-Point1b-50-1x-Area2 > Leveled (Leas...		
Axis:	X		
Length:	50.0	μm	
Size:	201	points	
Spacing:	0.250	μm	
Axis:	Y		
Length:	50.0	μm	
Size:	201	points	
Spacing:	0.250	μm	
Axis:	Z		
Length:	3184	nm	
Size:	2358	digits	
Spacing:	1.35	nm	
NMP ratio:	0.00 % (0 Pts)		

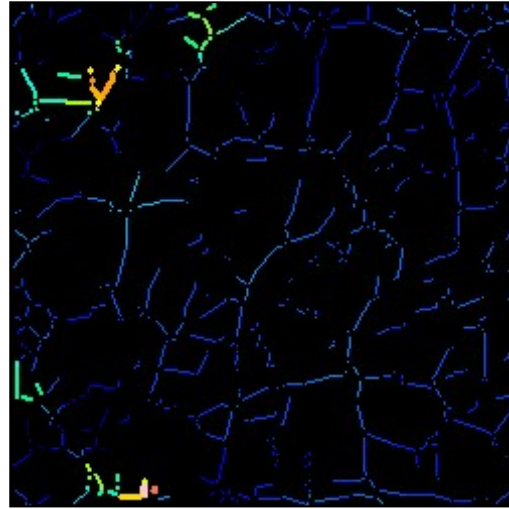
**Analyses:**  
**8. ISO 25178**  
**9. Furrow**  
**10. Texture isotropy and direction**  
**11. SSFA**

## B. Analyses

### 8. ISO 25178-2 parameters on surface #7

ISO 25178		
Height Parameters		
Sq	278	nm
Ssk	-1.53	
Sku	13.6	
Sp	1061	nm
Sv	2123	nm
Sz	3184	nm
Sa	188	nm
Functional Parameters		
Smr	41.5	%
Smc	264	nm
Sxp	670	nm
Spatial Parameters		
Sal	3.10	μm
Str	0.415	
Std	77.0	°
Hybrid Parameters		
Sdq	0.169	
Sdr	1.11	%
Functional Parameters (Volume)		
Vm	0.0156	μm <sup>3</sup> /μm <sup>2</sup>
Vv	0.280	μm <sup>3</sup> /μm <sup>2</sup>
Vmp	0.0156	μm <sup>3</sup> /μm <sup>2</sup>
Vmc	0.183	μm <sup>3</sup> /μm <sup>2</sup>
Vvc	0.239	μm <sup>3</sup> /μm <sup>2</sup>
Vvv	0.0405	μm <sup>3</sup> /μm <sup>2</sup>

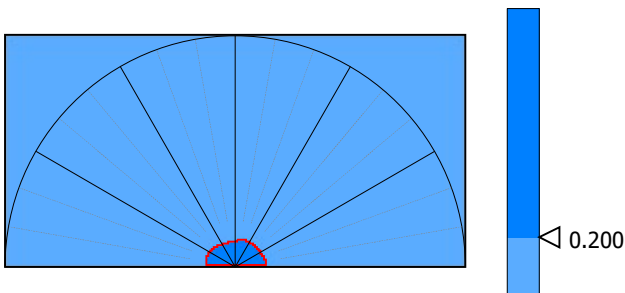
### 9. Furrow analysis surface #7



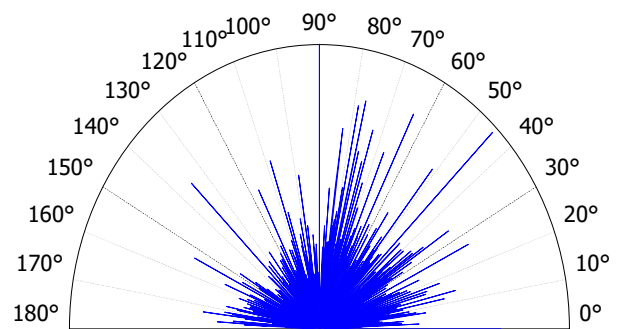
All furrows are shown.

Parameters	Value	Unit
Maximum depth of furrows	1118	nm
Mean depth of furrows	205	nm
Mean density of furrows	2152	cm/cm2

### 10. Texture isotropy and direction on surface #7



Parameters	Value	Unit
Isotropy	76.3	%
Periodicity	*****	%
Period	*****	μm
Direction of period	*****	°



Parameters	Value	Unit
Isotropy	41.5	%
First Direction	90.0	°
Second Direction	45.0	°
Third Direction	63.5	°

